

SRMTEC

ES3 & RS3 SERIES

Semi-hermetic Compact Screw Compressors



MADE IN ITALY





ADVANCED COMPRESSOR TECHNOLOGIES

The SRMTec brand represents the most complete range of screw compressors for commercial and industrial applications, straight from Europe's newest manufacturing facilities.

Our technologically innovative solutions are backed by expert support on every continent worldwide.



MADE IN ITALY

New production facility in Italy



Continuous Innovation

New production facility in Italy



MODEL DESIGNATION

	RS3-	H	140-	L	4	H
RS3-	= Refrigerant Screw Compressor					
H	= Motor size L = small motor size; H = large motor size.					
140	= Nominal power [Hp]					
L	= Accessories voltage L = Electrical accessories 220V AC 50/60Hz; M = Electrical accessories 110V AC 50/60Hz; Y = Electrical accessories 24V AC 50/60Hz; U = Electrical accessories UL approved 220V AC 50/60Hz (only for S series); V = Electrical accessories UL approved 110V AC 50/60Hz (only for S series)					
4	= Partial load control (0/4/Z) 0 = without steps capacity control; 4 = 4 steps capacity control (100-75-50% - minimum step) made with 3 solenoid valves, only for S series; Z = Infinite capacity control (from minimum capacity to 100% or from 50 to 100%), only for S series;					
H	= High compression ratio version (if required)					

	ES3-	H	140-	L	4	H
ES3-	= Efficient Screw Compressor					
H	= motor size H = full size L = small size					
140	= Nominal power [Hp]					
L	= Accessories voltage L = Electrical accessories 220V AC 50/60Hz; M = Electrical accessories 110V AC 50/60Hz; Y = Electrical accessories 24V AC 50/60Hz; U = Electrical accessories UL approved 220V AC 50/60Hz (only for S series); V = Electrical accessories UL approved 110V AC 50/60Hz (only for S series)					
4	= Partial load control (0/4/Z) 0 = without steps capacity control; 4 = 4 steps capacity control (100-75-50% - minimum step) made with 3 solenoid valves, only for S series; Z = Infinite capacity control (from minimum capacity to 100% or from 50 to 100%), only for S series;					
H	= High compression ratio version (if required)					

INTRODUCTION

In the air conditioning field, together with compressor reliability and availability, attention toward other factors such as efficiency, noiseless, compactness and the simplicity of installation and maintenance have spread the compact screw compressor technology to all markets.

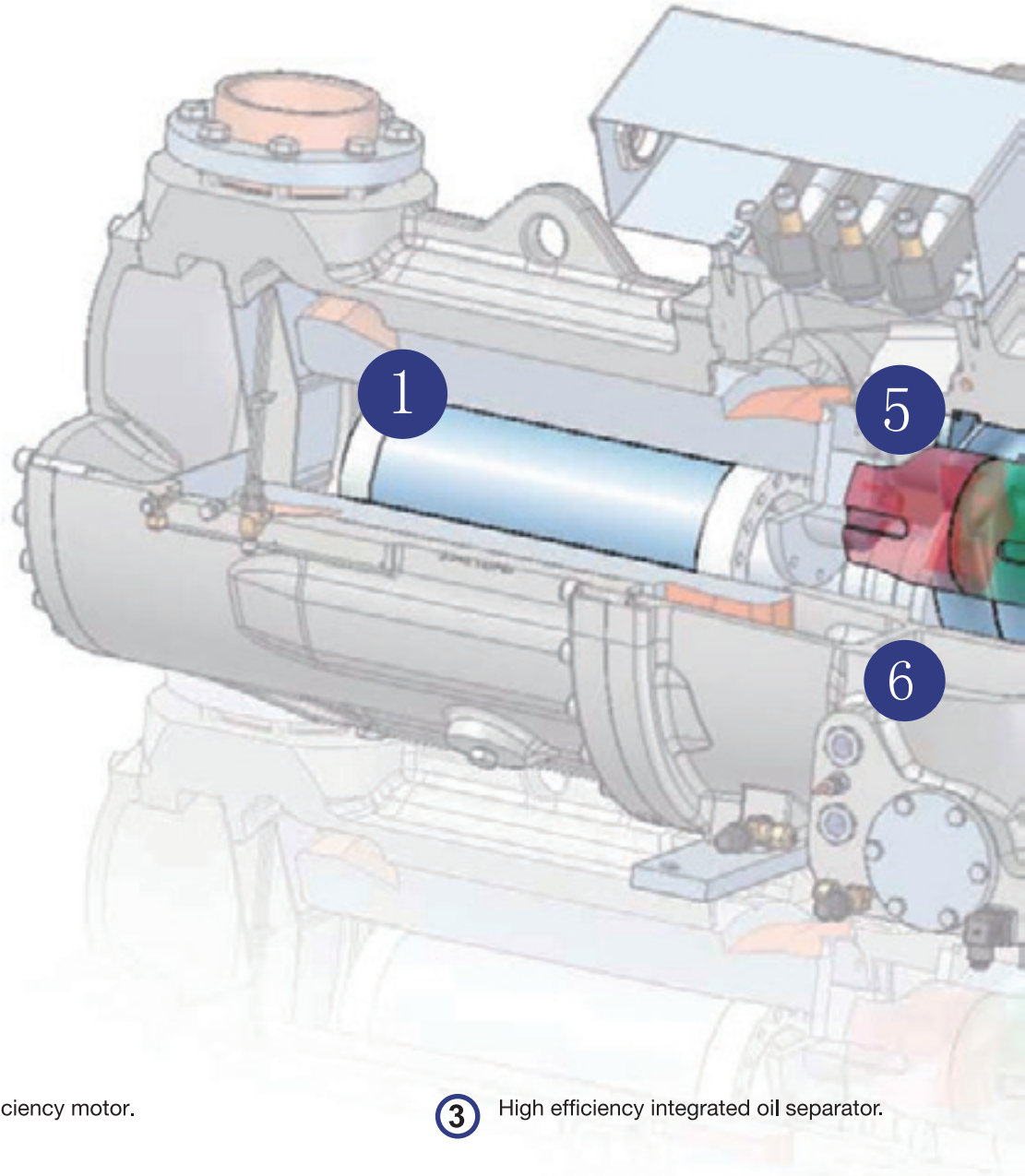
SRMTEC double screw compressors dedicated to air conditioning are:

RS3 is the name of the series dedicated to the use of refrigerants R22 and non-chlorinated R407C, R404A, R507, R134a.

ES3 is the name of the series dedicated to the use of R134a.



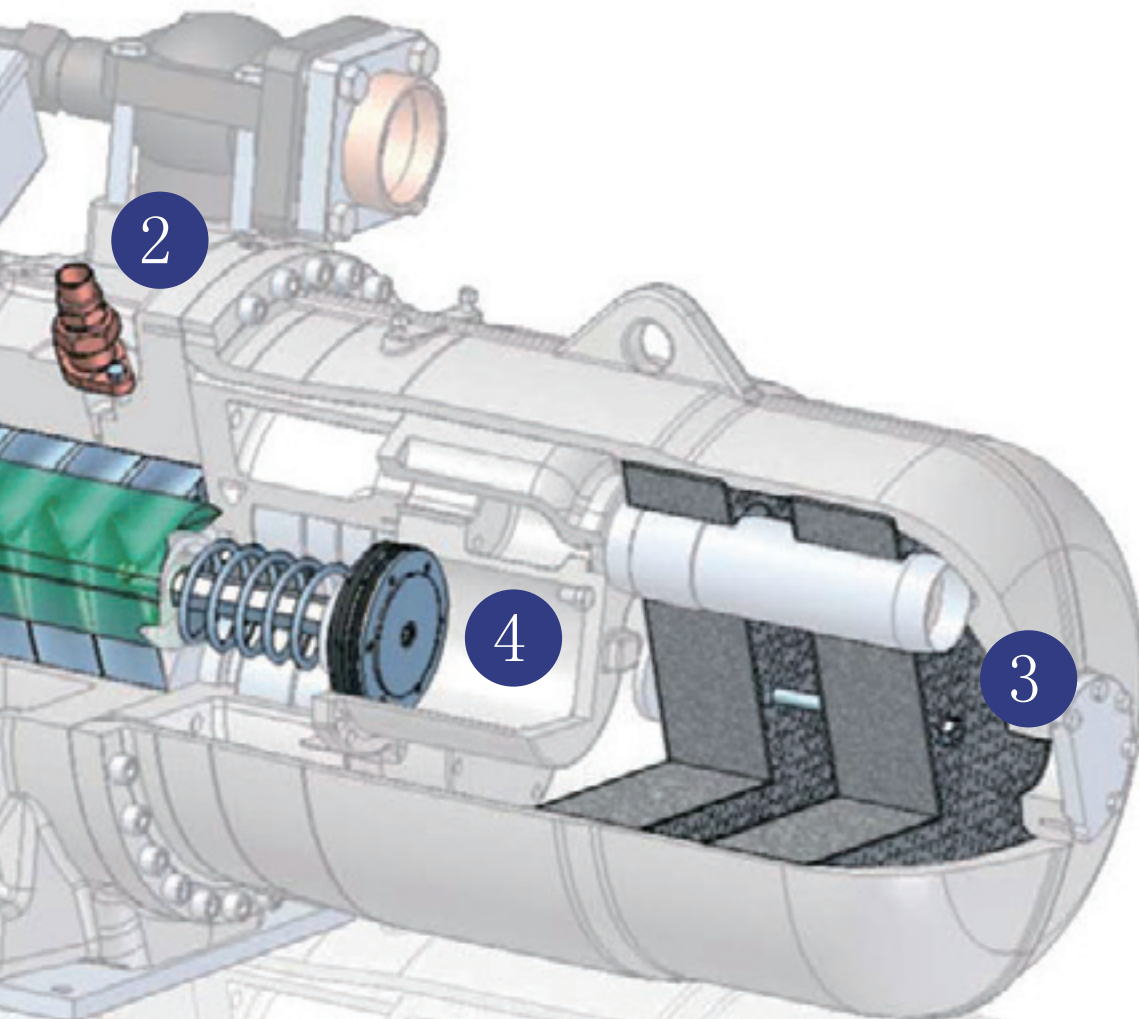
ES3 Series RS3 Series



① High efficiency motor.

③ High efficiency integrated oil separator.

② Intermediate port to the compression area for economizer or liquid injection.



④ Capacity control through hydraulic slide valve in step or stepless modality (RS3 and ES3 series).

⑥ Profiles of the screws optimized to grant the maximum efficiency.

⑤ For the biggest sizes is available the adjustable built-in volumetric ratio device.

TECHNICAL DATA

MODEL ES3				070	080	090	100	
Displacement at 50/60 [Hz]			m ³ /h	270/324	307/368	344/413	380/456	
Weight			Kg	510	518	532	538	
Oil charge			dm ³	11	11	11	11	
Crankcase heater								
Discharge line, internal Ø/Pipe size			mm inches	54.1/ 2- 1/8"	54.1/ 2- 1/8"	54.1/ 2- 1/8"	67.0/ 2- 5/8"	
Suction line, internal Ø/Pipe size			mm inches	80.0/ 3- 1/8"	80.0/ 3- 1/8"	92.5/ 3- 5/8"	92.5/ 3- 5/8"	
Capacity control steps								
Protection devices								
Lubricant								
Standard motor ⁽¹⁾								
Y / Δ	ES3(W)	Starting current	LRA Y	A	138	159	193	254
			LRA Δ	A	422	459	580	770
	ES3(L)/ES3(S)	Starting current	LRA Y	A	159	193	254	254
			LRA Δ	A	459	580	770	770
	ES3(R)	Starting current	LRA Y	A	-	254	254	-
			LRA Δ	A	-	770	770	-
	ES3(L)/ES3(S)	Max running current	FLA	A	107	111	123	131
			FLA	A	118	132	148	156
	ES3(R)	Max running current	FLA	A	-	142	160	-
FLA			A	-	142	160	-	

(1) Voltage tolerance ± 10%

110	120	140	160	180	210	220	240	270	300	
413/496	480/576	560/672	640/768	720/864	805/966	850/1020	910/1092	1000/1200	1100/1320	
660	670	680	930	940	950	980	1330	1350	1390	
17	17	17	23	23	23	23	25	25	25	
200W-230V-50/60 [Hz]			275W-230V-50/60 [Hz]							
80.0/ 3- 1/8"	80.0/ 3- 1/8"	80.0/ 3- 1/8"	80.0/ 3- 1/8"	80.0/ 3- 1/8"	80.0/ 3- 1/8"	80.0/ 3- 1/8"	80.0/ 3- 1/8"	105.5/ 4- 1/8"	105.5/ 4- 1/8"	105.5/ 4- 1/8"
105.5/ 4- 1/8"	105.5/ 4- 1/8"	105.5/ 4- 1/8"	105.5/ 4- 1/8"	105.5/ 4- 1/8"	105.5/ 4- 1/8"	105.5/ 4- 1/8"	105.5/ 4- 1/8"	134.8/Φ133	134.8/Φ133	134.8/Φ133
ES3 : Step :100,75,50%, Minimum . (Stepless : 100%..... Minimum . or 100.....50% on request)										
INT69 RCY										
CPI Solest 170 (Please contact RefComp if you have any special requirements)										
400/3/50 [Hz] - 460/3/60 [Hz]										
224	280	280	354	374	453	543	551	703	791	
693	842	842	1064	1155	1333	1645	1667	2109	2390	
156	174	199	229	254	266	276	330	367	402	
318	361	361	374	453	543	595	703	783	876	
953	1095	1095	1155	1333	1645	1802	2109	2348	2627	
182	202	228	260	295	310	335	400	435	490	
361	403	403	453	543	595	-	783	876	1062	
1095	1208	1208	1333	1645	1802	-	2348	2627	3186	
203	230	263	299	341	366	-	446	501	569	

TECHNICAL DATA

Model		RS3			040	050	060	070	080
Displacement at 50/60 [Hz]			[m ³ /h]		118/ 142	150/ 180	175/ 210	205/ 246	237/ 284
Weight			[Kg] ⁽¹⁾		325 (300)	330 (305)	335 (310)	510	515
Oil charge			[dm ³] ⁽¹⁾		6 (6,5)	6 (6,5)	6 (6,5)	7	7
Crankcase heater					200W - 230V - 50/60 [Hz]				
Discharge line, internal Ø/Pipe size			[inches / mm]		42.2/ 1- 5/8"	42.2/ 1- 5/8"	42.2/ 1- 5/8"	54.1/ 2- 1/8"	54.1/ 2- 1/8"
Suction line, internal Ø/Pipe size			[inches / mm]		54.1/ 2- 1/8"	54.1/ 2- 1/8"	54.1/ 2- 1/8"	67.0/ 2- 5/8"	67.0/ 2- 5/8"
Capacity control steps									
Protection devices									
Lubricant									
Standard motor ⁽²⁾									
Y / Δ	RS3	Starting current	LRA Y	[A]	109	131	134	139	159
			LRA Δ	[A]	331	398	406	422	459
		Max running current	FLA	[A]	70	82	86	105	115

(1) Data referred to RS3 models

(2) Voltage tolerance ±10%

100	110	120	140	160	180	210	220	240	270	300	340	390	
286/ 343	318/ 382	341/ 409	402/ 482	445/ 534	510/ 612	562/ 674	600/ 720	700/ 840	860/ 1032	910/ 1092	1000/ 1200	1100/ 1320	
615	590	625	730	740	775	1010	1030	1020	980	1400	1400	1400	
10	10	10	14	14	16	19	19	20	23	25	25	25	
			275W - 230V - 50/60 [Hz]										
54.1/ 2- 1/8"	54.1/ 2- 1/8"	54.1/ 2- 1/8"	80.0/ 3- 1/8"	80.0/ 3- 1/8"	80.0/ 3- 1/8"	80.0/ 3- 1/8"	80.0/ 3- 1/8"	80.0/ 3- 1/8"	80.0/ 3- 1/8"	80.0/ 3- 1/8"	105.5/ 4-1/8"	105.5/ 4-1/8"	105.5/ 4-1/8"
80.0 3- 1/8"	80.0 3- 1/8"	80.0 3- 1/8"	92.5/ 3- 5/8"	92.5/ 3- 5/8"	92.5/ 3- 5/8"	105.5/ 4- 1/8"	105.5/ 4- 1/8"	105.5/ 4- 1/8"	105.5/ 4- 1/8"	105.5/ 4- 1/8"	134.8/Φ133	134.8/Φ133	134.8/Φ133
RS3 : Step : 100,75,50%, Minimum .(Stepless: 100%..... Minimum. or 100.....50% on request)													
INT69 RCY													
RS3-H:5GS													
400/3/50 [Hz] - 460/3/60 [Hz]													
193	254	254	276	354	374	453	543	543	595	783	876	1062	
580	770	770	876	1155	1155	1333	1645	1645	1802	2348	2627	3186	
140	160	170	195	210	230	265	290	320	418	475	540	590	

BENEFITS

Efficiency

Built-in volumetric ratio could be chosen, in phase of order, between these values:

- | | |
|-----|--|
| ES3 | <p>$V_i = 2,2$ (W)
dedicated to water condensing units with flooded evaporator and high efficiency units</p> <p>$V_i = 2,6$ (L)
dedicated to water condensing units</p> <p>$V_i = 3,2$ (S)
dedicated to air condensing units</p> <p>$V_i = 4,4$ (R)
dedicated to air condensing units and /or heat pump applications</p> |
| RS3 | <p>$V_i = 2,2$ (W)
dedicated to water condensing units with flooded evaporator and high efficiency units</p> <p>$V_i = 2,6$ (S)
dedicated to air/water condensing units</p> <p>$V_i = 3,2$ (H)
dedicated to air condensing units and heat pump applications</p> |

For the biggest sizes is available, on request, the adjustable built-in volumetric ratio device, using which, the V_i can be set between different values:

- | | |
|-----|--|
| ES3 | <p>$V_i = 2,6 - 2,2$ (LW)</p> <p>$V_i = 3,2 - 2,6$ (SL)</p> <p>$V_i = 4,4 - 3,2$ (RS)</p> |
| RS3 | <p>$V_i = 2,6 - 2,2$ (SW)</p> <p>$V_i = 3,2 - 2,6$ (HS)</p> |

Choosing the right V_i the compression process can be adjusted to the actual compression ratio required, optimizing energy efficiency and allowing the highest EER.

Extent of delivery:

Y/Δ motor (400V-3-50Hz,460V-3-60Hz) with 6TC temperature sensors,suction shut-off valve (only on RS3 series),discharge shut-off valve,integrated check valve,integrated safety relief valve,flanged-on oil separator,oil sight glass,oil filter,oil charge. oil heater,4steps capacity control (100-75-50-min%) or stepless (100...min%),motor protection module (220V-1-50/60Hz),electrical box with enclosure class IP54,nitrogen protective charge,kit oil cooling connection (only on RS3 -040/050/060; RS3 -100/110/240/270/300/340/390),vibration dampers kit.

Accessories:

On request the following accessories can be delivered: special motors,suction shut-off valve, connection kit for liquid injection, connection kit for ECO port with shut-off valve,connection kit for oil cooling,oil level control,conversion kit for step-less capacity control,bridges for D.O.L starting.

Electrical accessories:

The electrical accessories of the compressor (motor protection module,oil heater,coils for solenoid valves) are suitable for 220V AC50/60 Hz in the standard delivery. Special voltages are available on request.

Name plate data:

The main characteristics of the compressor are showed on a metal label:-serial number -compressor model -electric motor data -lubricant type (M=oil for R22,E= oil for HFC refrigerants)-displacement(m³/h)The lubricant brand name and type are showed on a sticker.

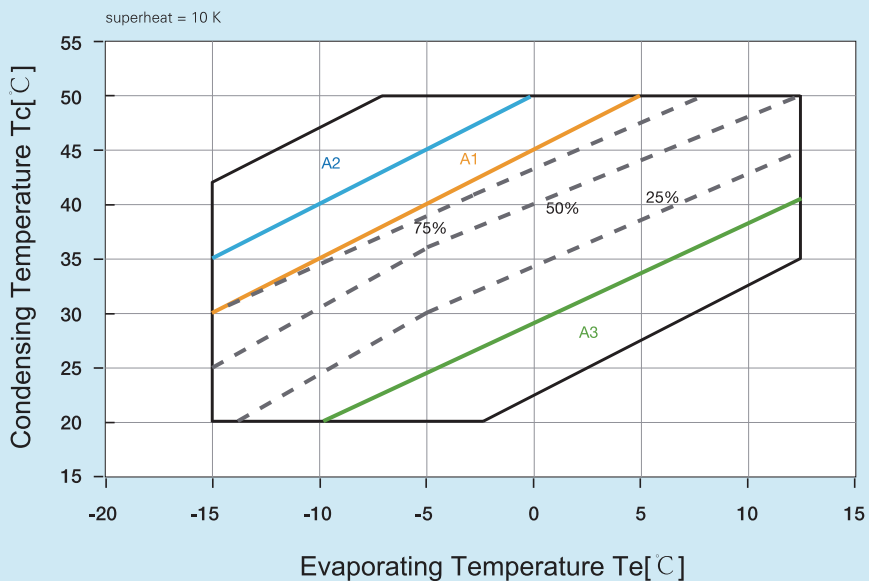
Applications:

Hard working conditions (high condensing temperature and /or low evaporating temperature) require the additional cooling of the compressor.The application limits of each refrigerant show three differentiated zones:zone n°1 identifies working conditions where additional cooling can be performed via oil cooling or liquid injection.Working conditions inside zone n°2 strictly require the oil cooling,Zone n°3 strictly requires the oil filter pressor drop must be monitored.For the dimensioning of the additional cooling circuits and the selection of the required additional components you can consult **SRMTEC** screw compressors application and maintenance manual.The global efficiency of the refrigerant cycle(COP) can be further increased by the subcooling economiser circuit(ECO).For the working principle,the subcooling circuit, and the selection of the additional components you can consult **SRMTEC** screw compressors application and maintenance manual.

ENVELOPE

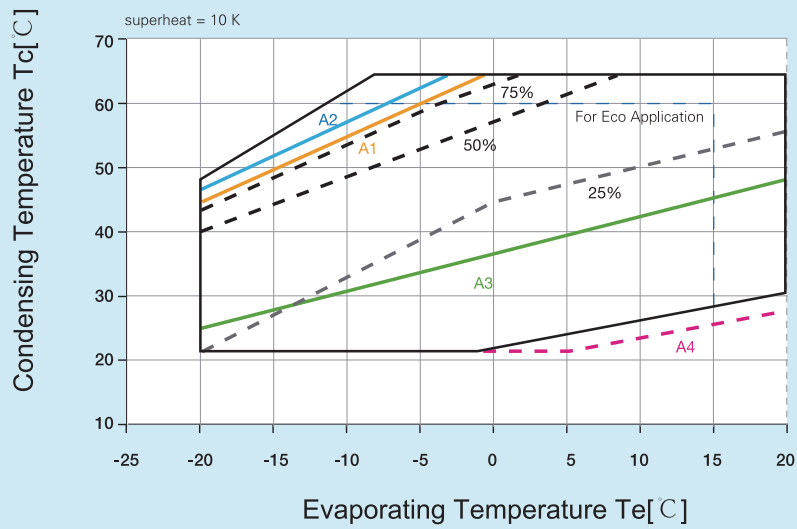
RS3 Series

- A1 = oil cooling or liquid inj.
- A2 = oil cooling
- A3 = oil filter control



ES3 Series

- A1 = oil cooling or liquid inj.
- A2 = oil cooling
- A3 = oil filter control
- A4 = working < 75%



PERFORMANCES ES3

ES3(W)				ES3(L)			
T e = 5 [°C]; Tc = 38 [°C]				T e = 2 [°C]; Tc = 45 [°C]			
MODEL	Q ₀ [kW]	Pa [kW]	COP	MODEL	Q ₀ [kW]	Pa [kW]	COP
ES3(W)-070	198	39,8	4,97	ES3(L)-070	148,5	44,5	3,34
ES3(W)-080	223,5	44,3	5,05	ES3(L)-080	167,5	49,4	3,39
ES3(W)-090	250,4	49,6	5,05	ES3(L)-090	187,6	55,3	3,39
ES3(W)-100	269,6	53,3	5,06	ES3(L)-100	201,9	59,4	3,40
ES3(W)-110	298,6	55,6	5,37	ES3(L)-110	244,6	67,1	3,65
ES3(W)-120	352,3	64,7	5,45	ES3(L)-120	275,2	74,2	3,71
ES3(W)-140	403,3	74,7	5,40	ES3(L)-140	317,4	84,7	3,75
ES3(W)-160	470,3	86,8	5,42	ES3(L)-160	369,3	100,2	3,69
ES3(W)-180	535,6	98,3	5,45	ES3(L)-180	418,1	112,2	3,73
ES3(W)-210	571,1	104,7	5,45	ES3(L)-210	446,8	118,7	3,76
ES3(W)-220	604,3	110,9	5,45	ES3(L)-220	471,7	126,5	3,73
ES3(W)-240	669,2	122,8	5,45	ES3(L)-240	522,3	139,4	3,75
ES3(W)-270	755,7	138,7	5,45	ES3(L)-270	589,8	155,8	3,79
ES3(W)-300	843,7	154,8	5,45	ES3(L)-300	658,5	176,9	3,72

ES3(S)				ES3(R)			
T e = 2 [°C]; Tc = 50 [°C]				T e = -5 [°C]; Tc = 53 [°C]			
MODEL	Q ₀ [kW]	Pa [kW]	COP	MODEL	Q ₀ [kW]	Pa [kW]	COP
ES3(S)-070	139,7	47,7	2,93	ES3(R)-080	105,7	51,1	2,07
ES3(S)-080	158,3	53,1	2,98	ES3(R)-090	120,4	57	2,11
ES3(S)-090	178,2	59,6	2,99	ES3(R)-110	162,7	72,4	2,25
ES3(S)-100	192	64,2	2,99	ES3(R)-120	185,9	78,7	2,36
ES3(S)-110	231,3	72,3	3,2	ES3(R)-140	214,4	89,8	2,39
ES3(S)-120	260,3	80	3,25	ES3(R)-160	245,2	106,8	2,3
ES3(S)-140	300,2	91,2	3,29	ES3(R)-180	282,3	119	2,37
ES3(S)-160	349,2	108	3,23	ES3(R)-210	301,7	125,8	2,4
ES3(S)-180	395,3	120,9	3,27	ES3(R)-240	346,8	148,6	2,33
ES3(S)-210	422,5	127,9	3,3	ES3(R)-270	398,3	165,1	2,41
ES3(S)-220	446	136,4	3,27	ES3(R)-300	444,7	187,5	2,37
ES3(S)-240	493,9	150,2	3,29				
ES3(S)-270	557,7	167,8	3,32				
ES3(S)-300	622,7	190,6	3,27				

KEY / LEGENDA

Q₀ = Cooling Capacity [kW] - Pa = Input Power [kW] - T_e = Evaporating temperature [°C, DEW]
 T_c = Condensing temperature [°C, DEW] - Liquid subcooling 5K - Suction gas superheat 10K / 1K;
 For product improvement, the performance parameter refer to the latest software selection of SRMTEC.

(W) : Vi = 2,2
 (L) : Vi = 2,6
 (S) : Vi = 3,2
 (R) : Vi = 4,4

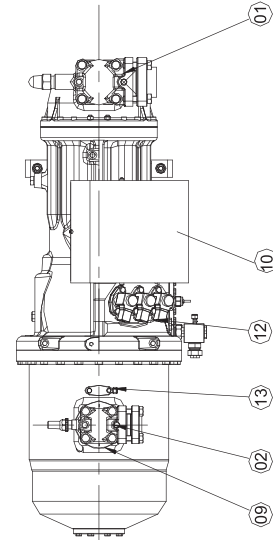
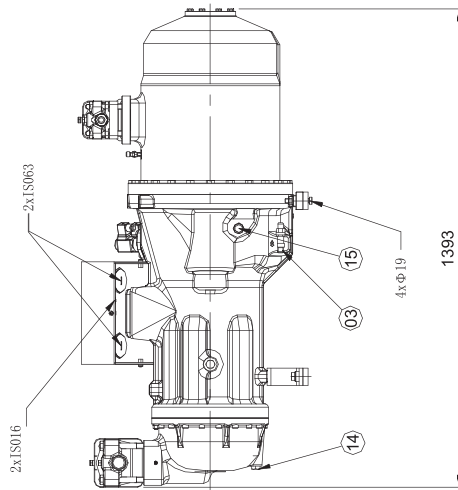
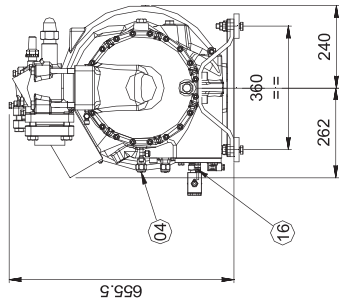
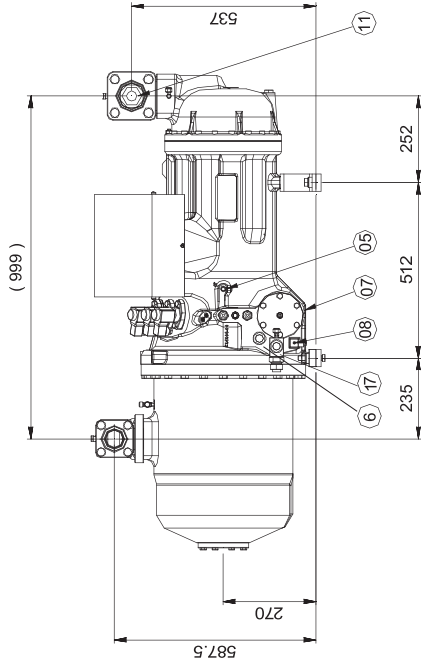
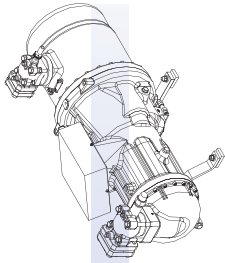
PERFORMANCES RS3

MODEL	RS3					
	Te=2[°C]; Tc=40[°C]			Te=2[°C]; Tc=50[°C]		
	Q _o [kW]	Pa [kW]	COP	Q _o [kW]	Pa [kW]	COP
RS3 - 040	113,8	28,7	3,97	95,7	35,5	2,7
RS3 - 050	144,6	35,7	4,05	121,6	44,2	2,75
RS3 - 060	158,7	37,6	4,22	137,8	45,6	3,02
RS3 - 070	184	43,7	4,21	159,8	52,9	3,02
RS3 - 080	212,8	50	4,26	184,7	60,5	3,05
RS3 - 100	261,6	60,3	4,34	227,1	73,1	3,11
RS3 - 110	291,1	67	4,34	252,7	81,1	3,12
RS3 - 120	315,1	72,6	4,34	273,5	88	3,11
RS3 - 140	375,3	85,4	4,39	325,8	103,5	3,15
RS3 - 160	419,4	94,6	4,43	364,0	114,6	3,18
RS3 - 180	463,5	105,7	4,39	410,6	128,7	3,19
RS3 - 200	510,8	116,5	4,38	452,5	141,8	3,19
RS3 - 220	545,3	124,4	4,38	483,1	151,4	3,19
RS3 - 240	647,9	155,3	4,17	577	184,2	3,13
RS3 - 270	744,4	180,2	4,13	638,9	223,2	2,86
RS3 - 300	896,7	212,8	4,21	798,5	252,3	3,16
RS3 - 340	1012,5	240,3	4,21	901,7	284,9	3,16
RS3 - 390	1130,5	268,3	4,21	1006,8	318,1	3,17

KEY / LEGENDA

Q_o = Cooling Capacity [kW] - Pa = Input Power [kW] - Te = Evaporating temperature [°C, DEW]
 Tc = Condensing temperature [°C, DEW] - Liquid subcooling 5K - Suction gas superheat 10K / 1K;
 For product improvement, the performance parameter refer to the latest software selection of SRMTEC .

ES3 070-080-090-100

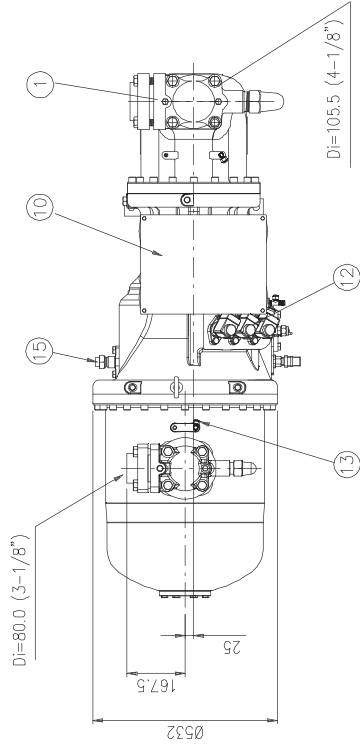
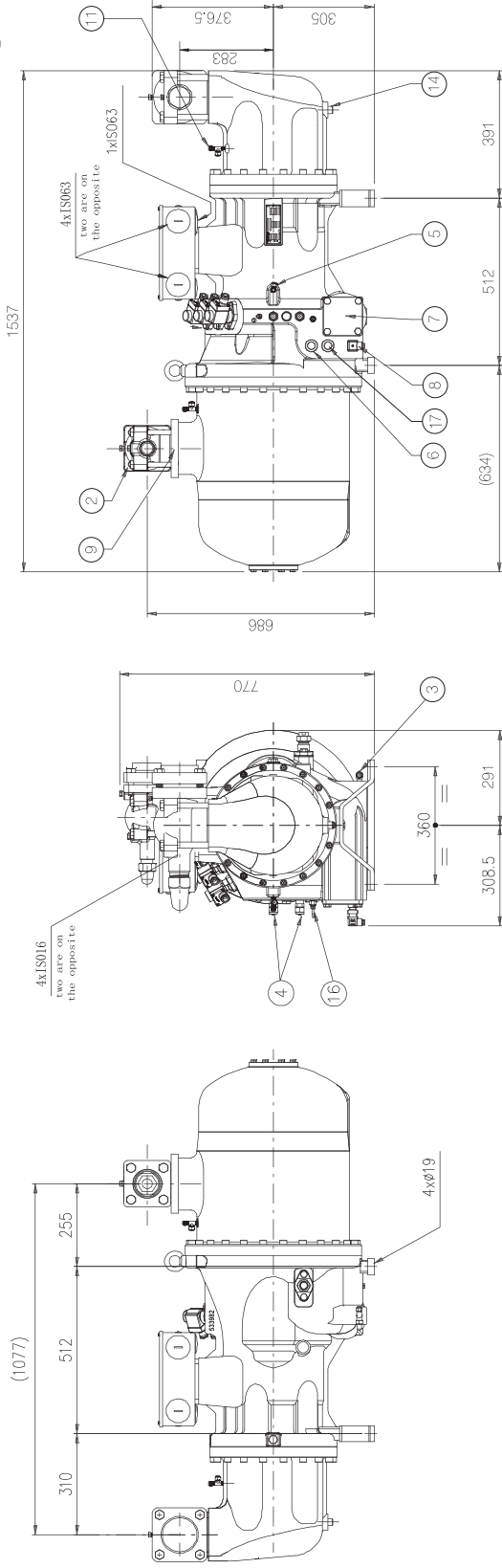
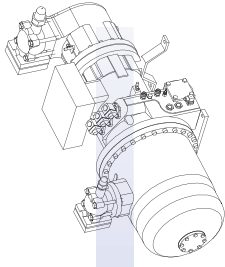


Inner diameter of the suction valve interface	
Compressor standard configuration	Inner diameter of the exhaust valve interface
ES3 070-080	54.1 (2-1/8")
ES3 090	54.1 (2-1/8")
ES3 100	67.0 (2-5/8")

KEY

1. Suction shut-off valve (optional)
2. Exhaust gas shut-off valve
3. Oiling / oil drain valve 3/8" SAE-FLARE
4. Oil cooler connector 5/8" SAE-FLARE
5. Hydraulic fittings 1/4" SAE-FLARE
6. Mirror to inspect the oil level
7. Oil filter
8. Oil heater
9. Check valve
10. Junction box
11. Low pressure connector 1/4" SAE-FLARE
12. Cooling capacity regulating solenoid valve
13. High pressure connector 1/4" SAE-FLARE
14. Low pressure side discharge port
15. Spray liquid interface φ10/Economic machine interface φ22 (optional accessories)
16. Oil temperature sensor 1/8" NPT
17. Oil valve switch (optional)

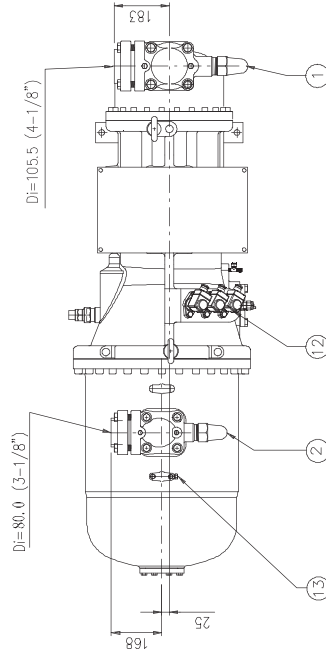
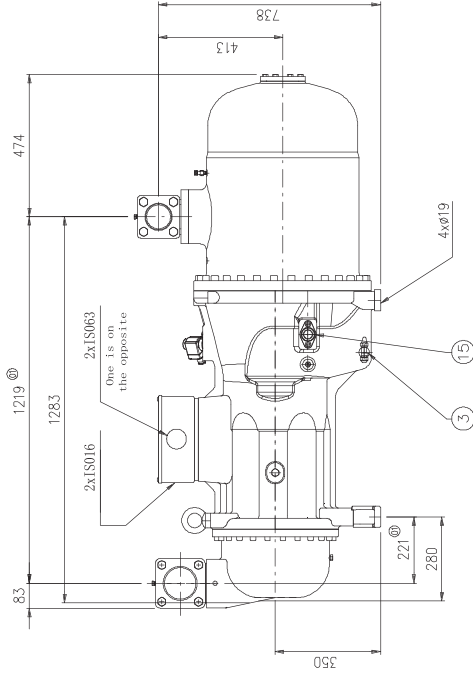
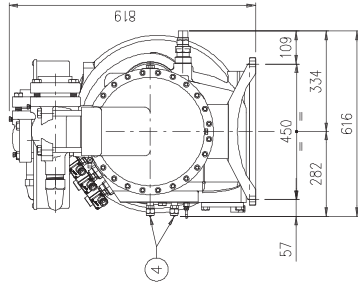
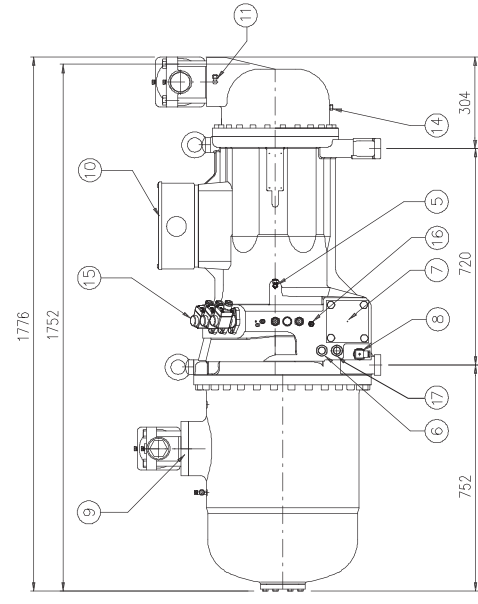
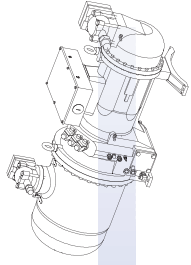
ES3 110-120-140



KEY

1. Suction shut-off valve (optional)
2. Exhaust gas shut-off valve
3. Oiling / oil drain valve 3/8" SAE-FLARE
4. Oil cooler connector 5/8" SAE-FLARE
5. Hydraulic fittings 1/4" SAE-FLARE
6. Mirror to inspect the oil level
7. Oil filter
8. Oil heater
9. Check valve
10. Junction box
11. Low pressure connector 1/4" SAE-FLARE
12. Cooling capacity regulating solenoid valve
13. High pressure connector 1/4" SAE-FLARE
14. Low pressure side discharge port
15. Spray liquid interface $\phi 10$ /Economic machine interface $\phi 28$ (optional accessories)
16. Oil temperature sensor 1/8" NPT
17. Oil valve switch (optional)

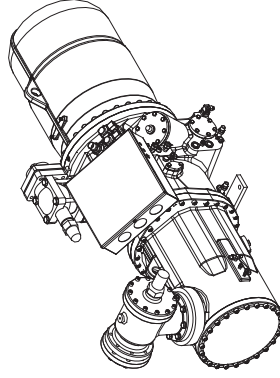
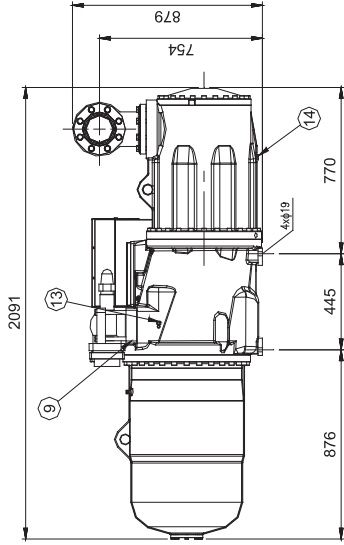
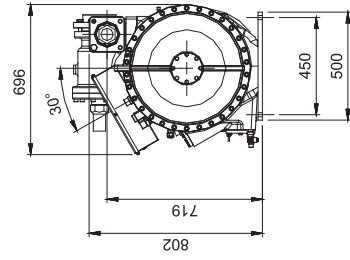
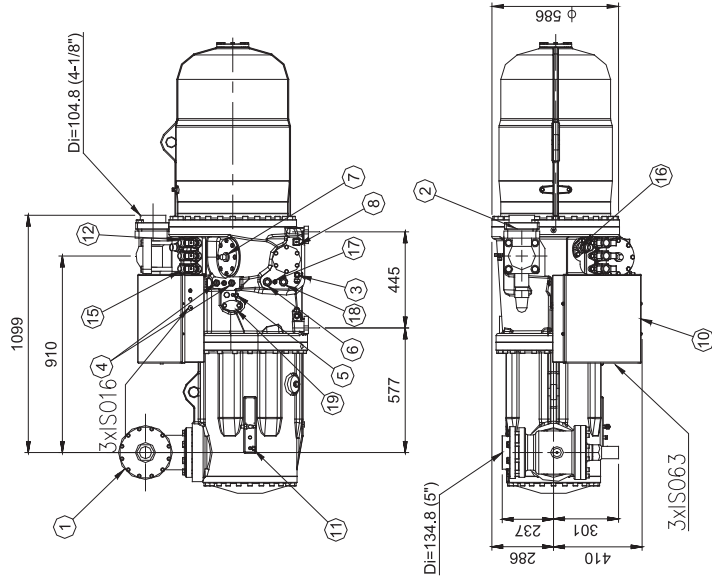
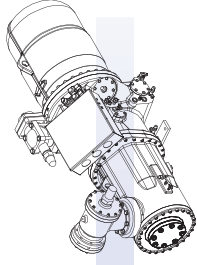
ES3 160-180-210-220



KEY

1. Suction shut-off valve (optional)
2. Exhaust gas shut-off valve
3. Oiling / oil drain valve 3/8" SAE-FLARE
4. Oil cooler connector 5/8" SAE-FLARE
5. Hydraulic fittings 1/4" SAE-FLARE
6. Mirror to inspect the oil level
7. Oil filter
8. Oil heater
9. Check valve
10. Junction box
11. Low pressure connector 1/4" SAE-FLARE
12. Cooling capacity regulating solenoid valve
13. High pressure connector 1/4" SAE-FLARE
14. Low pressure side discharge port 1/4" NPT
15. Spray liquid interface ϕ 10/Economic machine interface ϕ 28 (optional accessories)
16. Oil temperature sensor 1/8" NPT
17. Oil valve switch (optional)

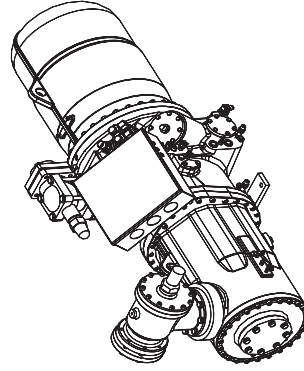
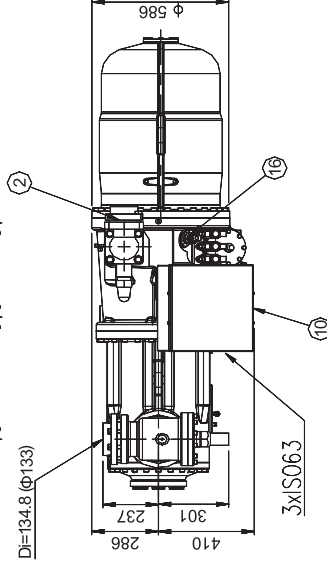
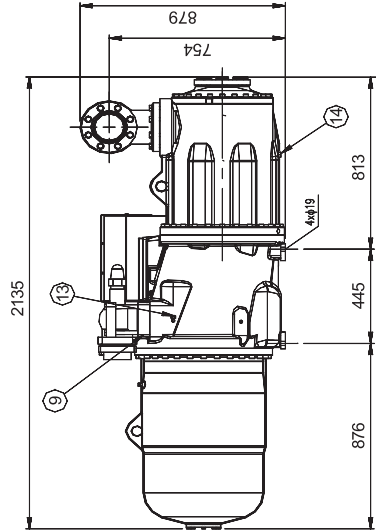
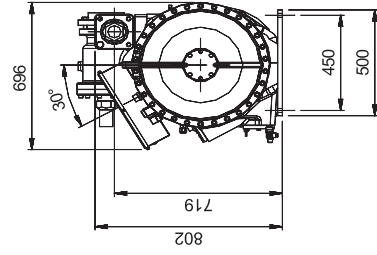
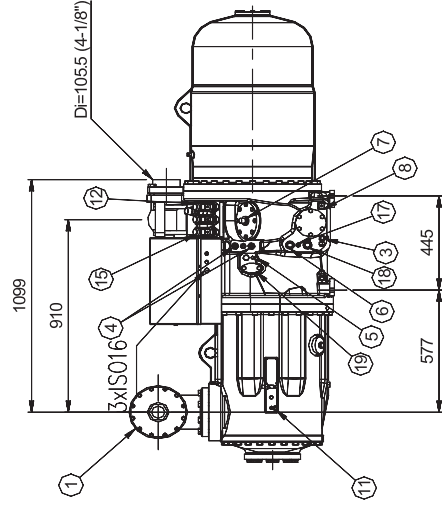
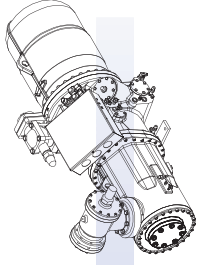
ES3 240-270-300 / RS3 300-340-390 (radial suction, standard)



KEY

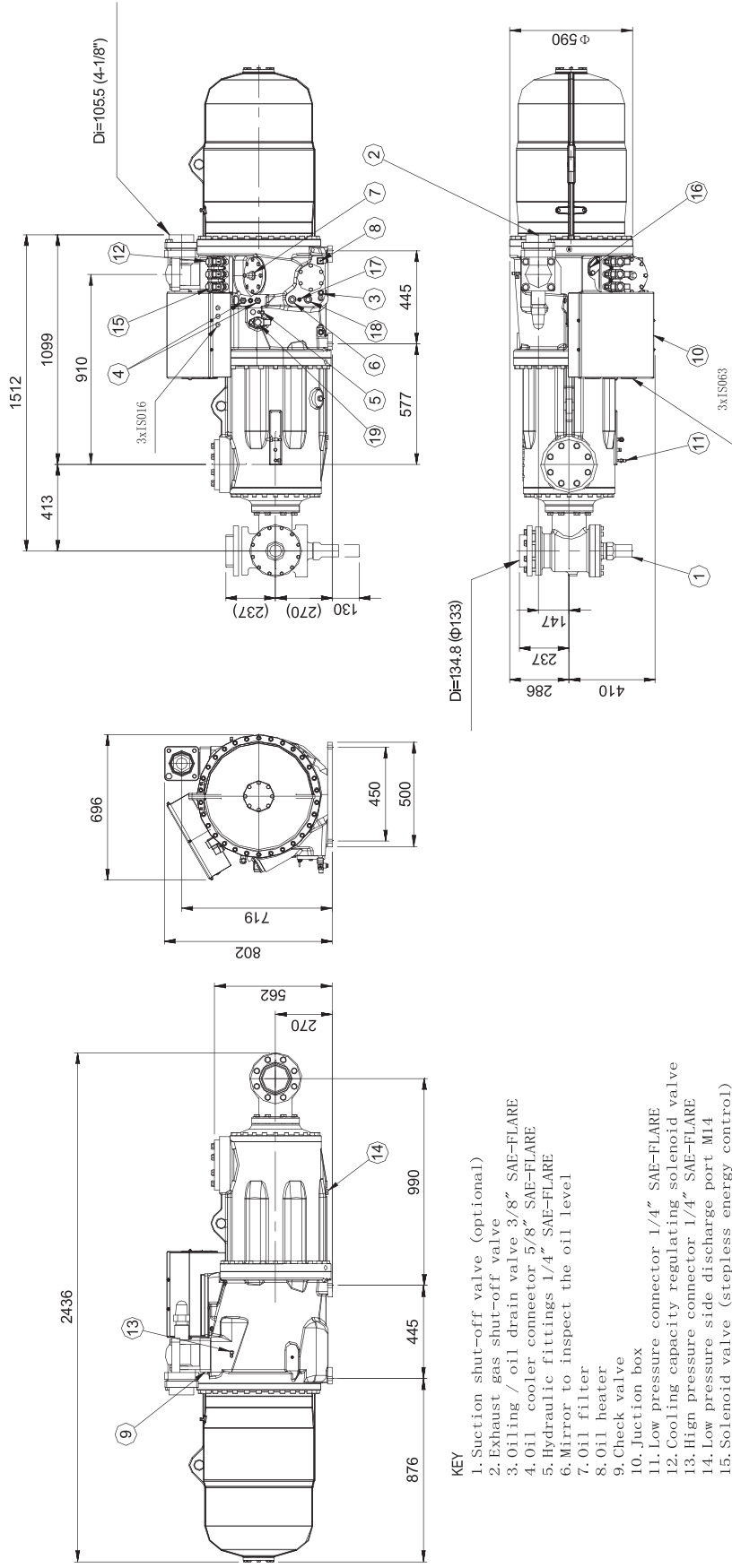
1. Suction shut-off valve (optional)
2. Exhaust gas shut-off valve
3. Oiling / oil drain valve 3/8" SAE-FLARE
4. Oil cooler connector 5/8" SAE-FLARE
5. Hydraulic fittings 1/4" SAE-FLARE
6. Mirror to inspect the oil level
7. Oil filter
8. Oil heater
9. Check valve
10. Junction box
11. Low pressure connector 1/4" SAE-FLARE
12. Cooling capacity regulating solenoid valve
13. High pressure connector 1/4" SAE-FLARE
14. Low pressure side discharge port
15. Solenoid valve (stepless energy control)
16. Spray liquid interface Φ 10/Economic machine interface Φ 42 (optional accessories)
17. Oil temperature sensor 1/8" NPT
18. Oil valve switch (optional)
19. VI control solenoid valve (optional accessories)

ES3 240-270-300 / RS3 300-340-390 (radial suction, optional)

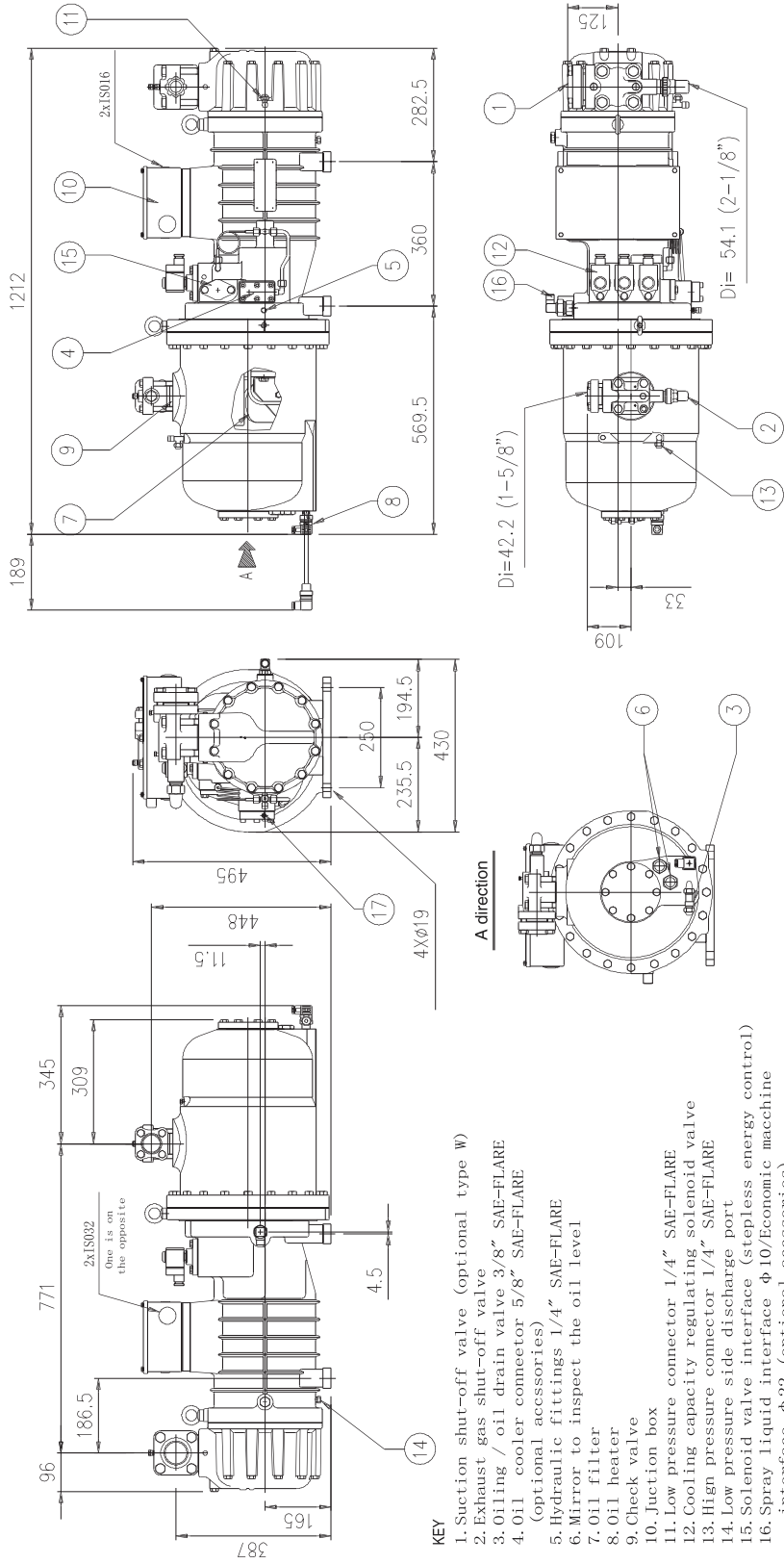


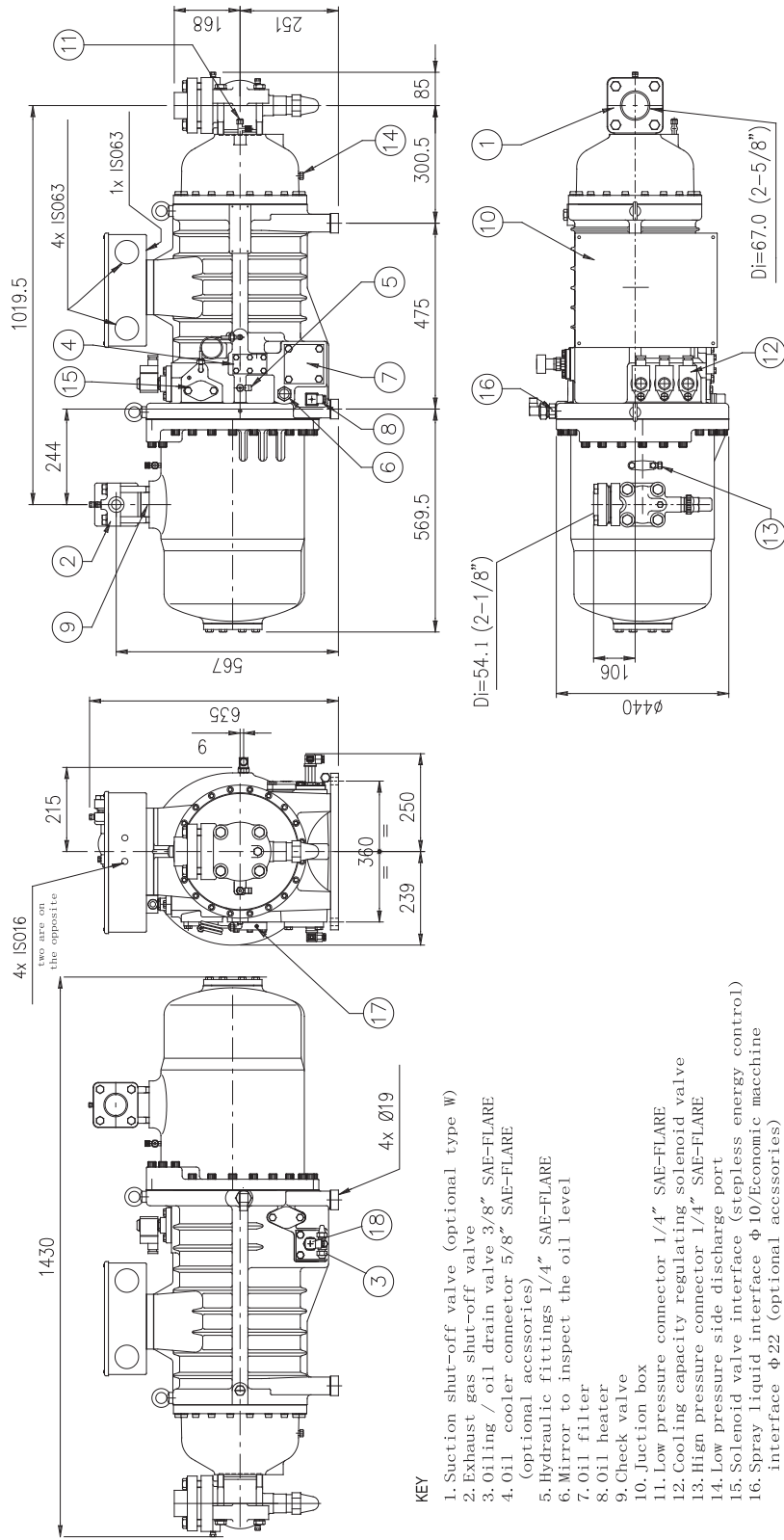
- KEY
1. Suction shut-off valve (optional)
 2. Exhaust gas shut-off valve
 3. Oiling / oil drain valve 3/8" SAE-FLARE
 4. Oil cooler connector 5/8" SAE-FLARE
 5. Hydraulic fittings 1/4" SAE-FLARE
 6. Mirror to inspect the oil level
 7. Oil filter
 8. Oil heater
 9. Check valve
 10. Junction box
 11. Low pressure connector 1/4" SAE-FLARE
 12. Cooling capacity regulating solenoid valve
 13. High pressure connector 1/4" SAE-FLARE
 14. Low pressure side discharge port
 15. Solenoid valve (stepless energy control)
 16. Spray liquid interface φ10/Economic machine interface φ42 (optional accessories)
 17. Oil temperature sensor 1/8" NPT
 18. Oil valve switch (optional)
 19. VI control solenoid valve (optional accessories)

ES3 240-270-300 / RS3 300-340-390 (axial suction, optional)



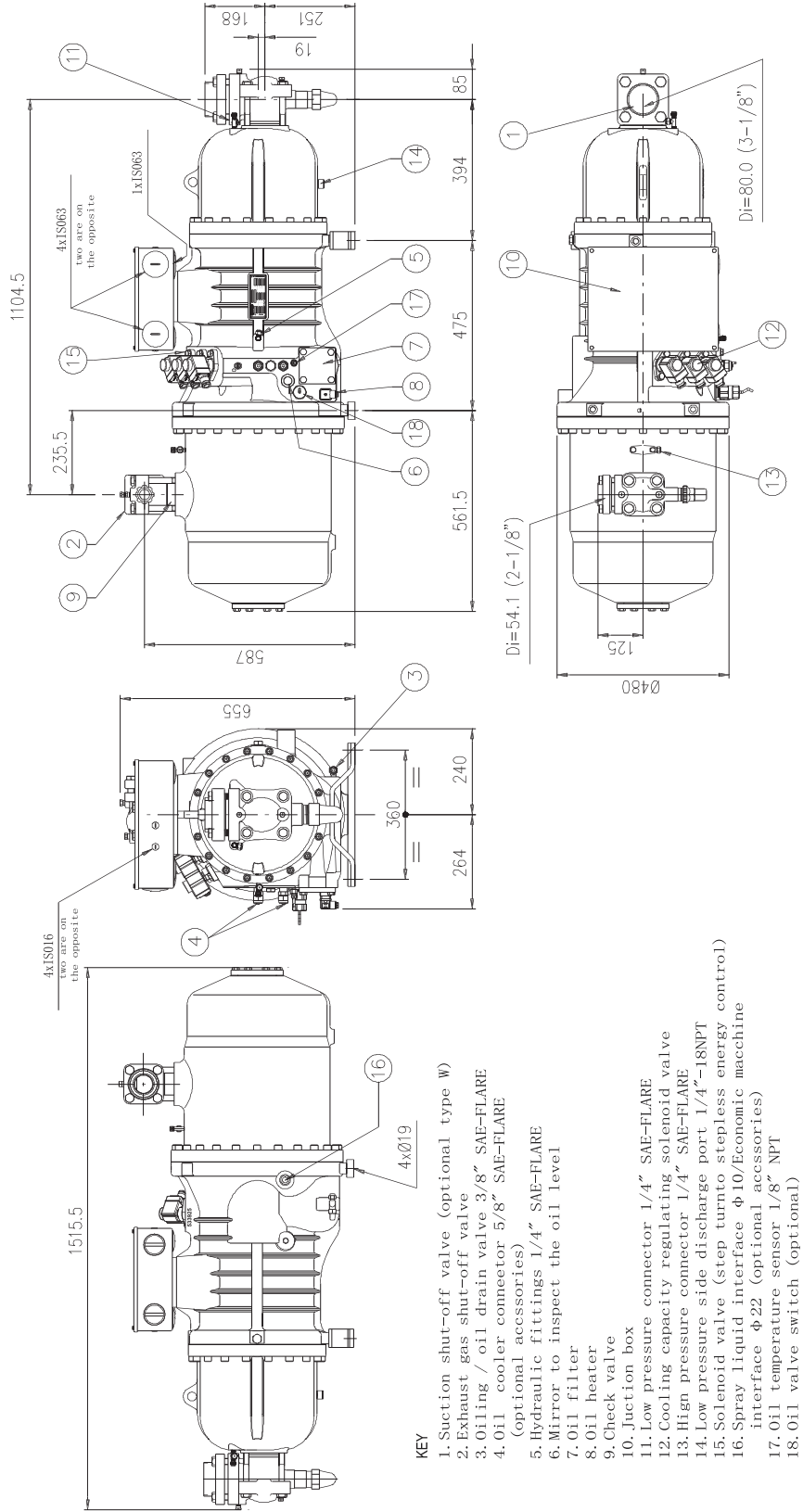
- KEY
- 1. Suction shut-off valve (optional)
 - 2. Exhaust gas shut-off valve
 - 3. Oiling / oil drain valve 3/8" SAE-FLARE
 - 4. Oil cooler connector 5/8" SAE-FLARE
 - 5. Hydraulic fittings 1/4" SAE-FLARE
 - 6. Mirror to inspect the oil level
 - 7. Oil filter
 - 8. Oil heater
 - 9. Check valve
 - 10. Junction box
 - 11. Low pressure connector 1/4" SAE-FLARE
 - 12. Cooling capacity regulating solenoid valve
 - 13. High pressure connector 1/4" SAE-FLARE
 - 14. Low pressure side discharge port M14
 - 15. Solenoid valve (stepless energy control)
 - 16. Spray liquid interface φ10/Economic machine interface φ42 (optional accessories)
 - 17. Oil temperature sensor 1/8" NPT
 - 18. Oil valve switch (optional)
 - 19. VI control solenoid valve (optional accessories)

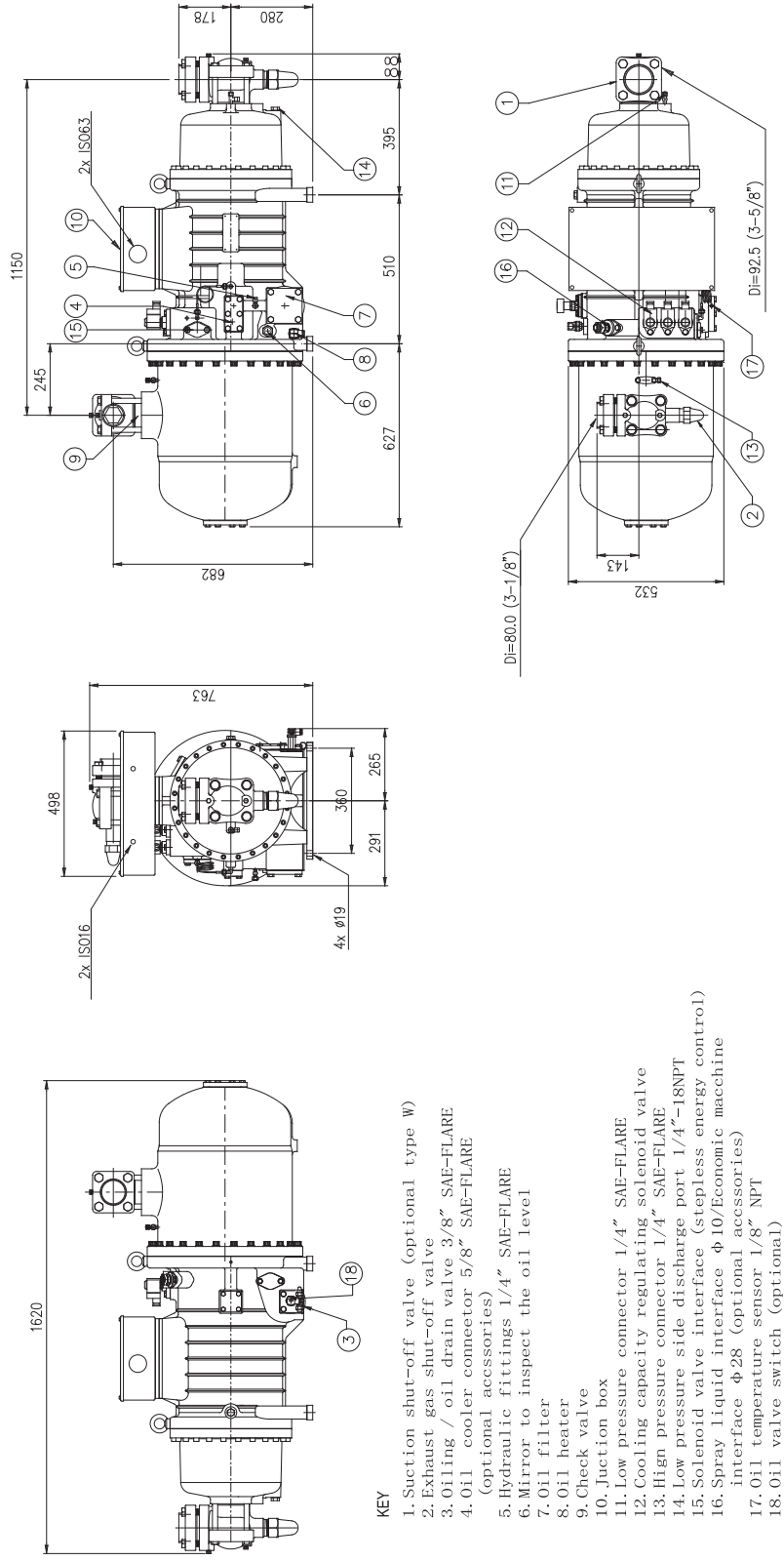




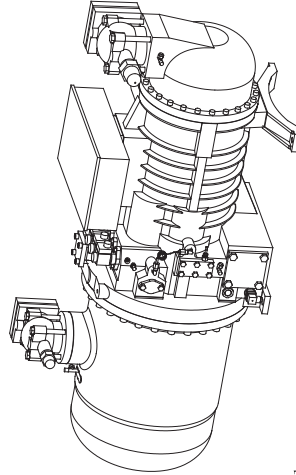
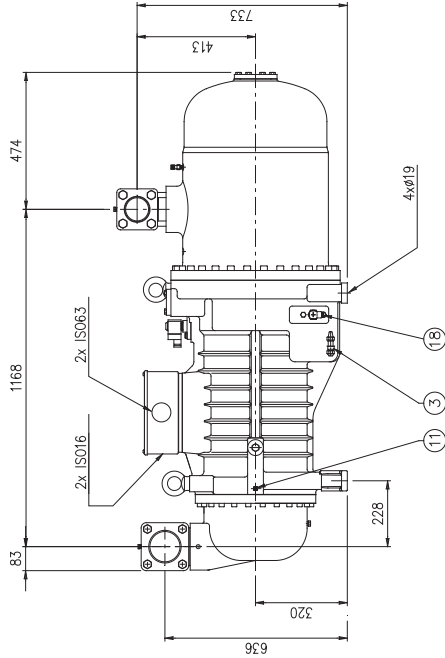
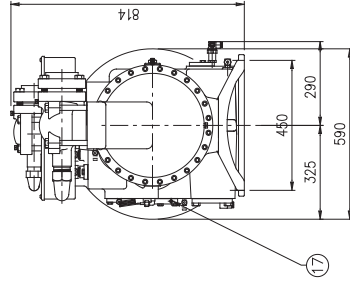
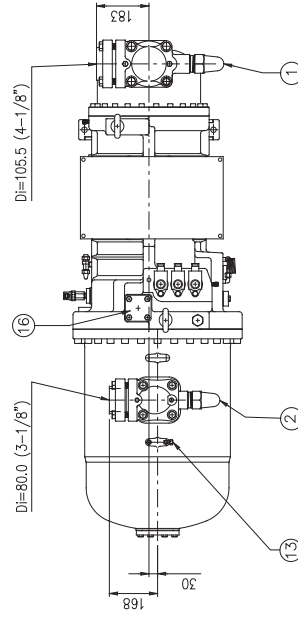
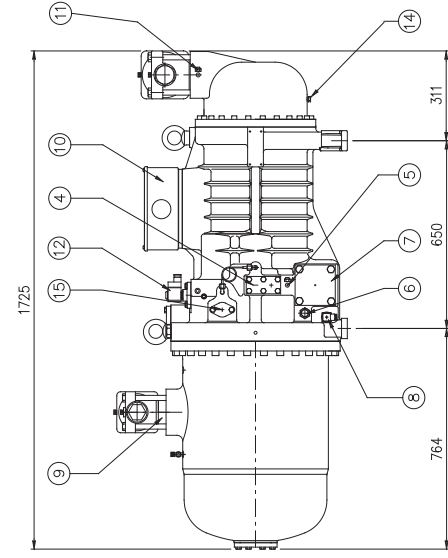
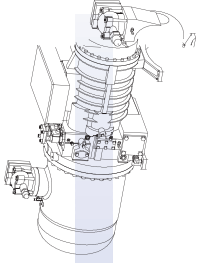
KEY

- 1. Suction shut-off valve (optional type W)
- 2. Exhaust gas shut-off valve
- 3. Oiling / oil drain valve 3/8" SAE-FLARE
- 4. Oil cooler connector 5/8" SAE-FLARE (optional accessories)
- 5. Hydraulic fittings 1/4" SAE-FLARE
- 6. Mirror to inspect the oil level
- 7. Oil filter
- 8. Oil heater
- 9. Check valve
- 10. Junction box
- 11. Low pressure connector 1/4" SAE-FLARE
- 12. Cooling capacity regulating solenoid valve
- 13. High pressure connector 1/4" SAE-FLARE
- 14. Low pressure side discharge port
- 15. Solenoid valve interface (stepless energy control)
- 16. Spray liquid interface $\Phi 10$ /Economic machine interface $\Phi 22$ (optional accessories)
- 17. Oil temperature sensor 1/8" NPT
- 18. Oil valve switch (optional)





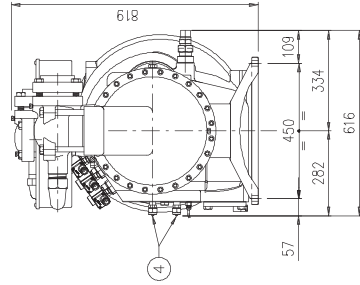
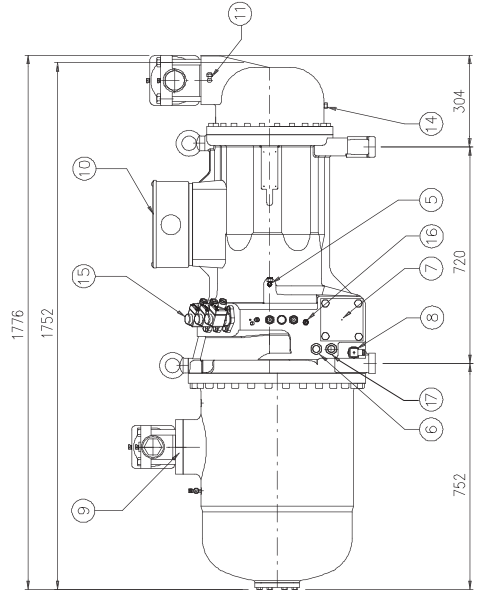
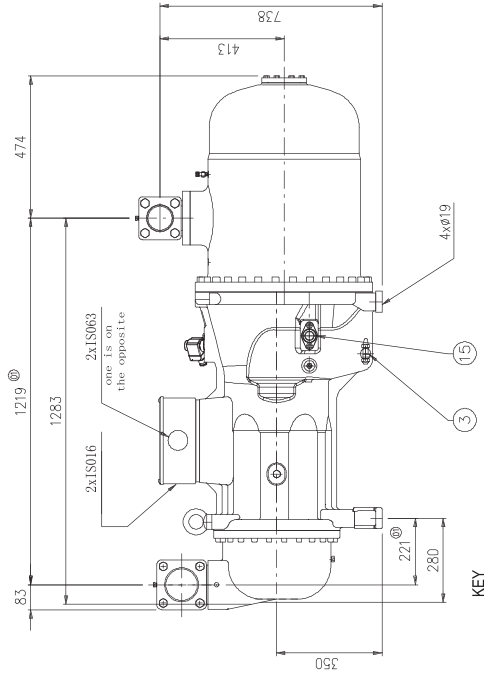
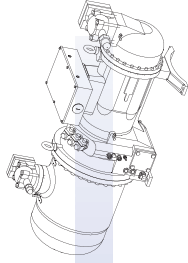
RS3 200-220-240



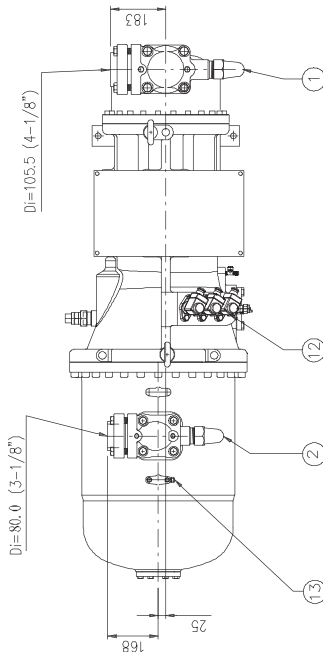
KEY

1. Suction shut-off valve (optional type W)
2. Exhaust gas shut-off valve
3. Oiling / oil drain valve 3/8" SAE-FLARE
4. Oil cooler connector 5/8" SAE-FLARE (optional accessories)
5. Hydraulic fittings 1/4" SAE-FLARE
6. Mirror to inspect the oil level
7. Oil filter
8. Oil heater
9. Check valve
10. Junction box
11. Low pressure connector 1/4" SAE-FLARE
12. Cooling capacity regulating solenoid valve
13. High pressure connector 1/4" SAE-FLARE
14. Low pressure side discharge port 1/4"-18NPT
15. Solenoid valve interface (stepless energy control) interface $\phi 42$ (optional accessories)
17. Oil temperature sensor 1/8" NPT
18. Oil valve switch (optional)

RS3 270



- KEY**
1. Suction shut-off valve (optional type W)
 2. Exhaust gas shut-off valve
 3. Oiling / oil drain valve 3/8" SAE-FLARE
 4. Oil cooler connector 5/8" SAE-FLARE
 5. Hydraulic fittings 1/4" SAE-FLARE
 6. Mirror to inspect the oil level
 7. Oil filter
 8. Oil heater
 9. Check valve
 10. Junction box
 11. Low pressure connector 1/4" SAE-FLARE
 12. Cooling capacity regulating solenoid valve
 13. High pressure connector 1/4" SAE-FLARE
 14. Low pressure side discharge port 1/4"-18NPT
 15. Spray liquid interface Φ 10/Economic machine interface Φ 22 (optional accessories)
 16. Oil temperature sensor 1/8" NPT
 17. Oil valve switch (optional)



RS3 300-340-390 (see page 21,22,23)



SRMTEC

SABCOTEC - Iran, Tehran - Tel: +98 217753 3637 - Fax: +98 217753 0884 - sales@sabcotech.com